

Link to practice tests:

<https://pasma.co.uk/scaffold-towers/test-your-tower-knowledge/>

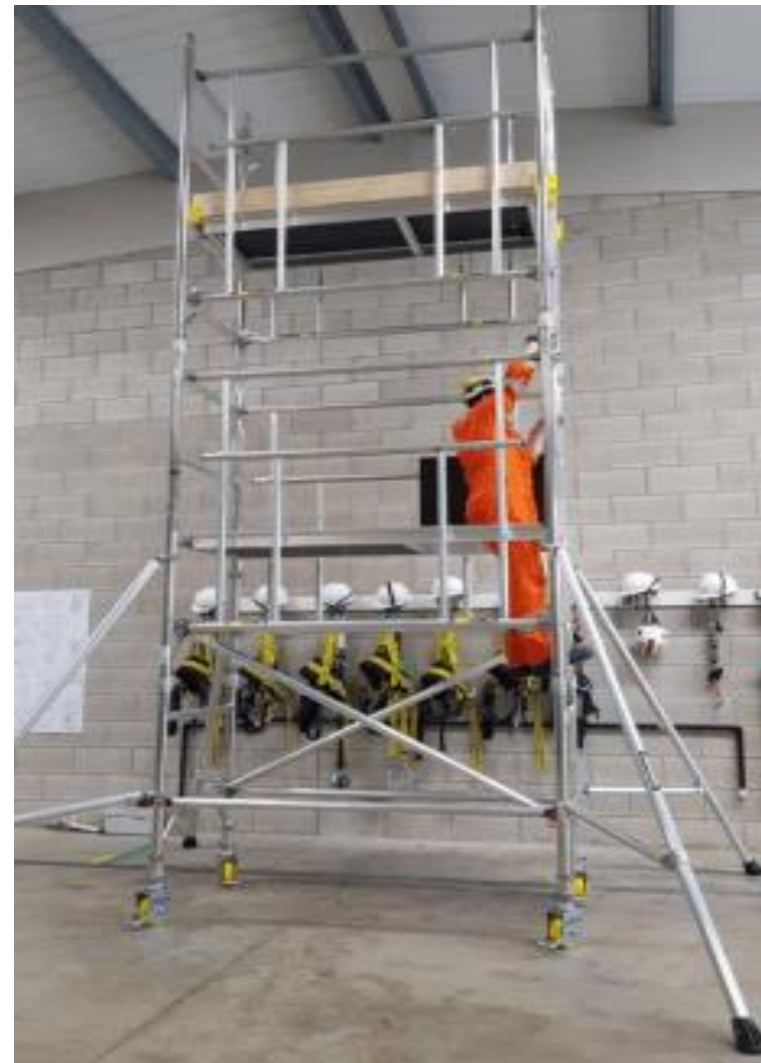
Have any questions?

Don't hesitate to call or e-mail us:

☎ *01228 739019*

✉ *info@btp-cumbria.co.uk*

## PASMA Mobile Towers



PASMA Towers for Users will equip you with the specialist knowledge you need to work safely with mobile access towers. Spend one day at an approved PASMA training centre with an expert instructor and go back to work knowing:

- How to safely assemble, dismantle, alter and move mobile access towers
- How to safely use mobile access towers
- How to inspect mobile access towers
- How to identify hazards relating to their use
- What legislation, regulations and guidance are applicable to these towers

If you're new to towers or tower training, Towers for Users is the ideal starter course.

On successfully completing the theory and practical segments of the course, you'll receive a PASMA Card and Certificate. Your PASMA card will open doors to jobs in all sorts of industries, so be sure to highlight it to employers.

Assessment details

- Theory assessment (multiple choice / 80% pass mark)
- Practical assessment

Through a combination of theory and practical work, you will learn about:

- Work at height responsibilities of employers, employees and suppliers
- Standards affecting the manufacture and use of mobile access towers
- Where to find crucial safety information
- When it's safe to use a mobile access tower, and when it's not
- Carrying out pre-use checks and post-assembly inspections on mobile access towers
- Assembling and dismantling a mobile access tower using 3T and AGR
- Good practices for the safe use of mobile access towers
- Accessing a platform safely
- Moving a mobile access tower
- The components used in a mobile access tower
- Identifying hazards in the work environment
- Avoiding personal health hazards

Duration: 1 day.